

West Coast Shellfish Farming Company



Nootka Sound Shellfish Ltd Vancouver Island

\$199,900 Canadian

Be your own boss on the west coast of Vancouver Island! Nootka Sound Shellfish Ltd currently operates three shellfish tenures in the picturesque Nootka Sound region.

SHELLEY McKAY

Personal Real Estate Corporation
Cell (250) 830-4435

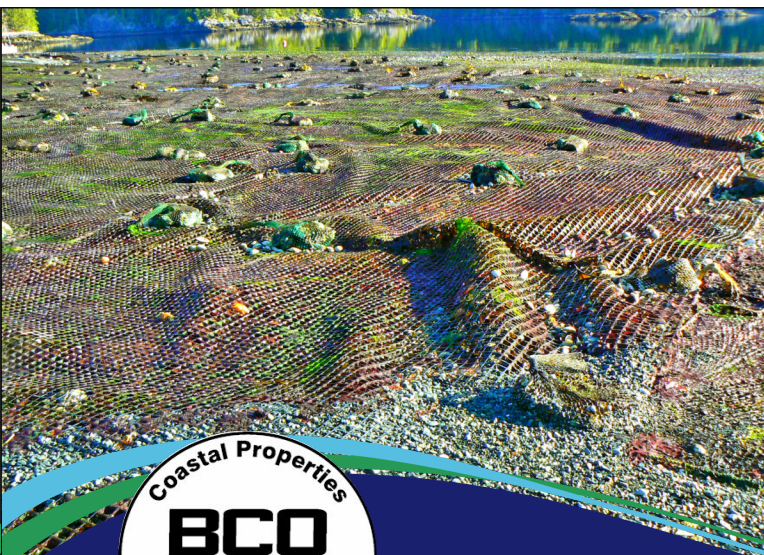
AREN KNUDSEN

REALTOR®
Cell (250) 203-0664

ED HANDJA

Personal Real Estate Corporation
Cell (250) 287-0011





These are all producing sites, focusing on clams and oysters, with quality product buyers in place. The seller is willing to assist a new owner with learning the farms and the basic workings of the business. This is an amazing opportunity for someone to take over this established operation.

This offering is a share sale for the purchase of Nootka Sound Shellfish Limited. The assets include the three shellfish tenures in a well-known and productive ocean harvest region, with boat access from Gold River, Tahsis or Zeballos on Vancouver Island. Plumper and Kendrick are both intertidal tenures, while Hanna Creek is both an intertidal and a deep-water site. While currently used to boost oyster seed, this deep water could also accommodate a floating cabin. The assets also include a 29ft skiff which is registered in the company's name, used to carry product and equipment and to travel between sites. The company has been operating on the west coast of Vancouver Island for decades and is actively involved with the BC Shellfish Growers Association.





Kendrick Inlet Tenure:

13.5 acres on an undeveloped beach, fronting Crown land, located at the north end of Kendrick Inlet in Nootka Sound and approx. two nautical miles north of the Plumper Harbour tenure. There is a minimum of 7 acres of clam ground, with an estimated standing stock of manila clams of 100,000 pounds, with a current value in excess of the listing price. There is some oyster growing area here, however it does require protection to prevent the seed oysters from blowing away. The ground is excellent for clam growing, mainly small pebbles, mud and sand mixed. Much of the clam ground has been protected with predator nets. The lease is in good standing and the current tenure is in place to 2029. The seller believes this is likely the best clam beach in Nootka Sound and one of the best clam beaches on the west coast of Vancouver Island.

13.5 acre beachfront site | excellent clam beach





3.7 acre beachfront site | clam and oyster



Plumper Harbour tenure:

3.7 acre intertidal beachfront tenure that has been actively farmed for over 20 years by the same grower, located on the north end of Plumper Harbour and facing Matute Island to the east. There is about one acre of clam ground, most of which is protected by predation nets. There is enough oyster ground here to comfortably grow out 500,000 single oysters from seed to small size, 3 to 4 inch of body cup. The current management plan was crafted by Aquabusiness Management Ltd following a site survey in 1995. The plan is straightforward; put seed on the beach, rescue any oysters that blow too far up the beach, harvest and sell. The renewal of the license of occupation will require an update to the management plan and the sellers would be happy to advise a new buyer on the process. The farm is limited in height and cannot exceed equipment, netting, etc of 14 inches. This is due to the riparian rights of the upland property owners.





Hanna Creek tenure:

This is the main farm for the company where product is sorted and taken off-site from all three tenures, and where equipment is stored. It includes deep water rafts and a beachfront growing area. Hanna Creek is in Hanna Channel, to the south-east of the other two tenures, approx. 7.4 nautical miles from the Plumper Harbour tenure. It looks west to Bligh Island and has easy access to both Tlupana Inlet and Muchalat Inlet. The eastern portion is protected by a breakwater and there are rafts, grow out equipment and a seed nursery. This site is used for oysters as the beach is not generally suitable for clams.



6.177 acres | beach front and deep water





29ft skiff included | equipment included

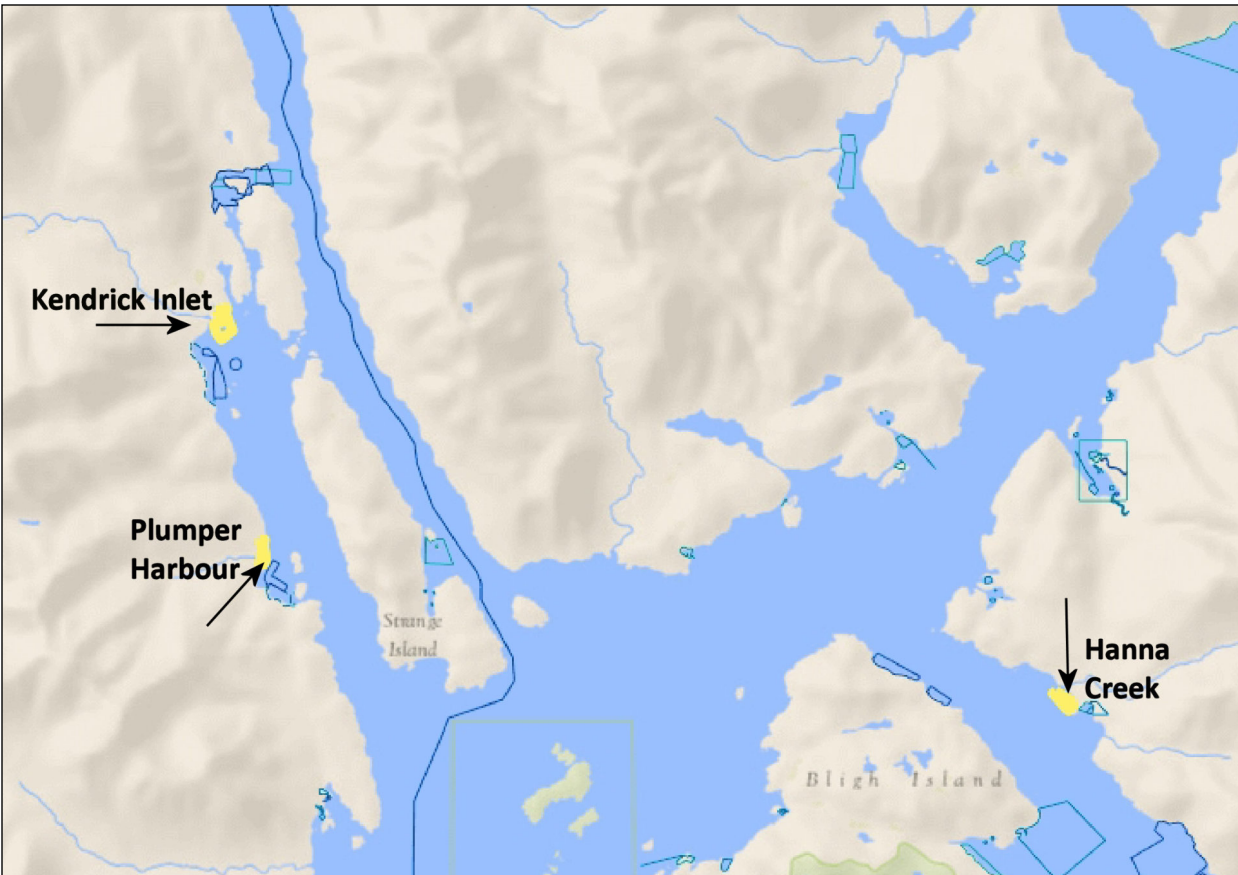
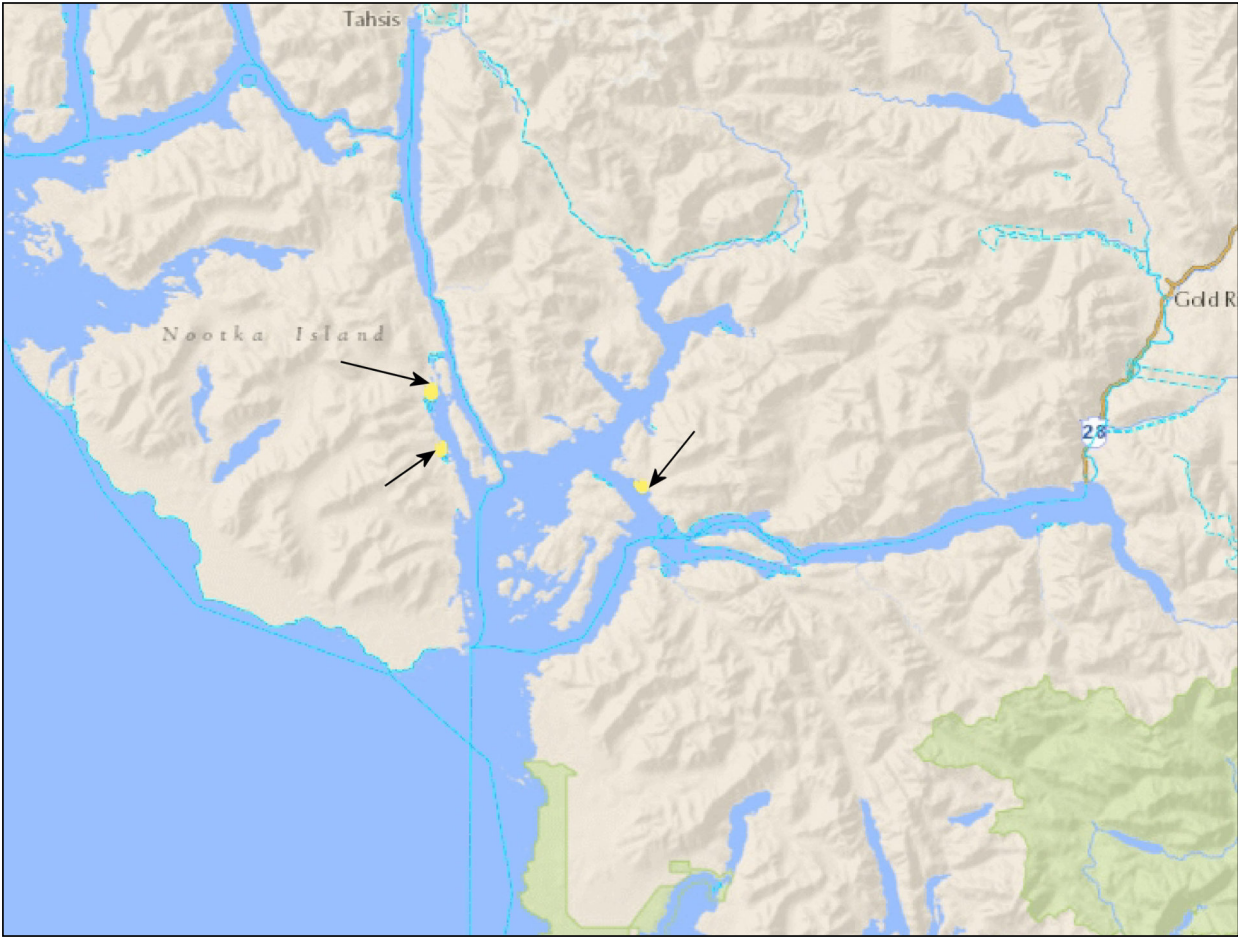
The government recently introduced new rules and regulations regarding branding of equipment, traceability, etc for shellfish growers, and the seller has worked diligently to bring all three tenures and all equipment into almost full compliance. A full equipment list is available.

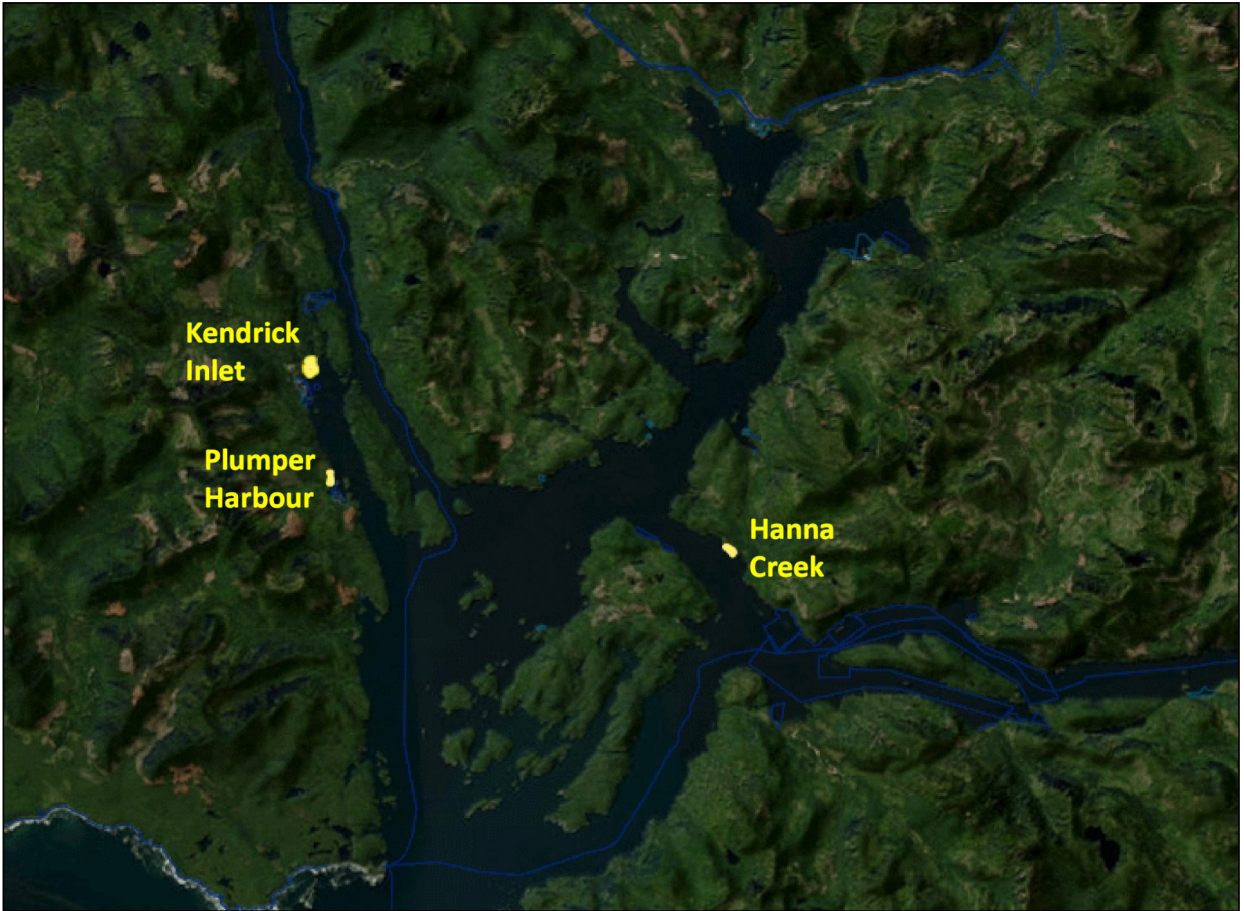
In addition, there is a 29 foot by 8 foot work skiff, powered by twin 50 horsepower Yamaha outboard motors. The skiff is well suited as a work vessel for carrying equipment and product between the three tenures.

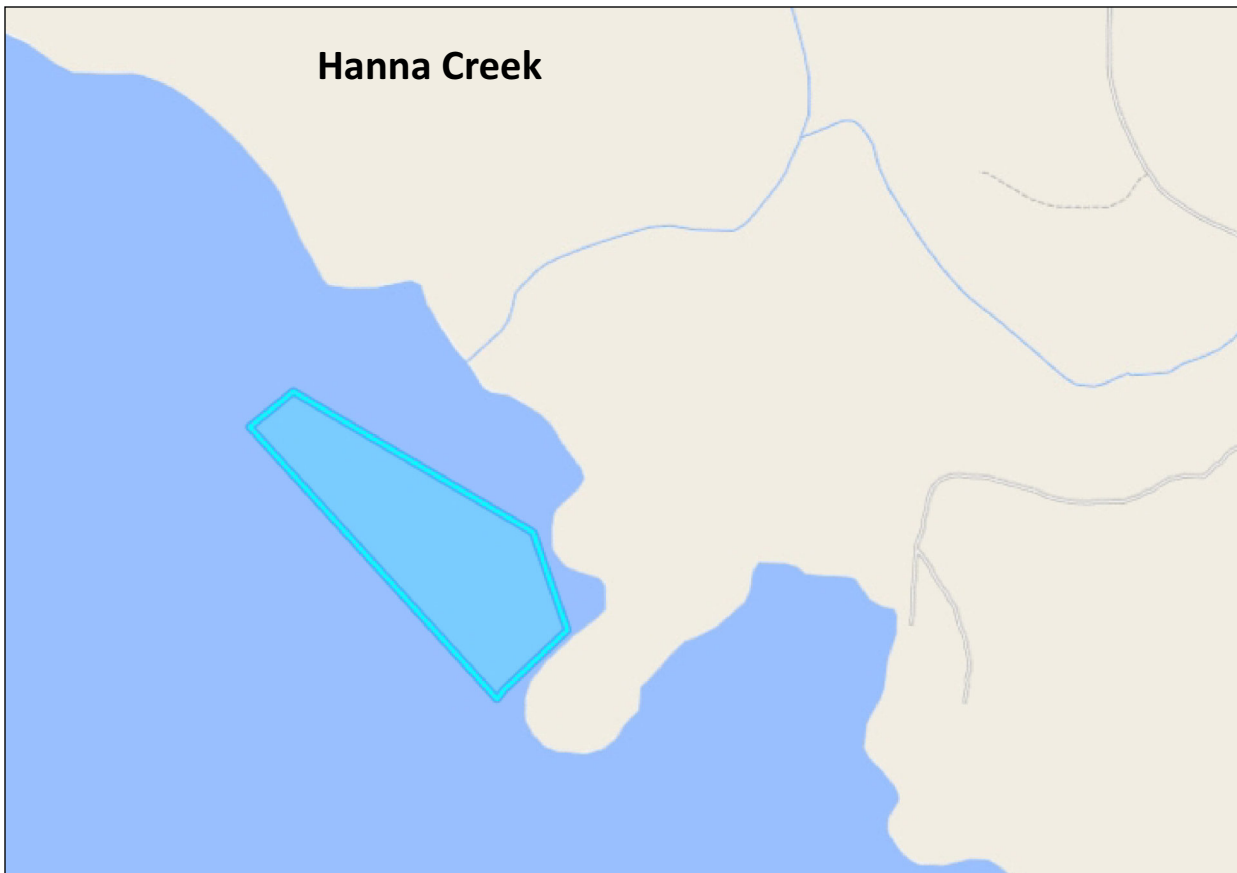
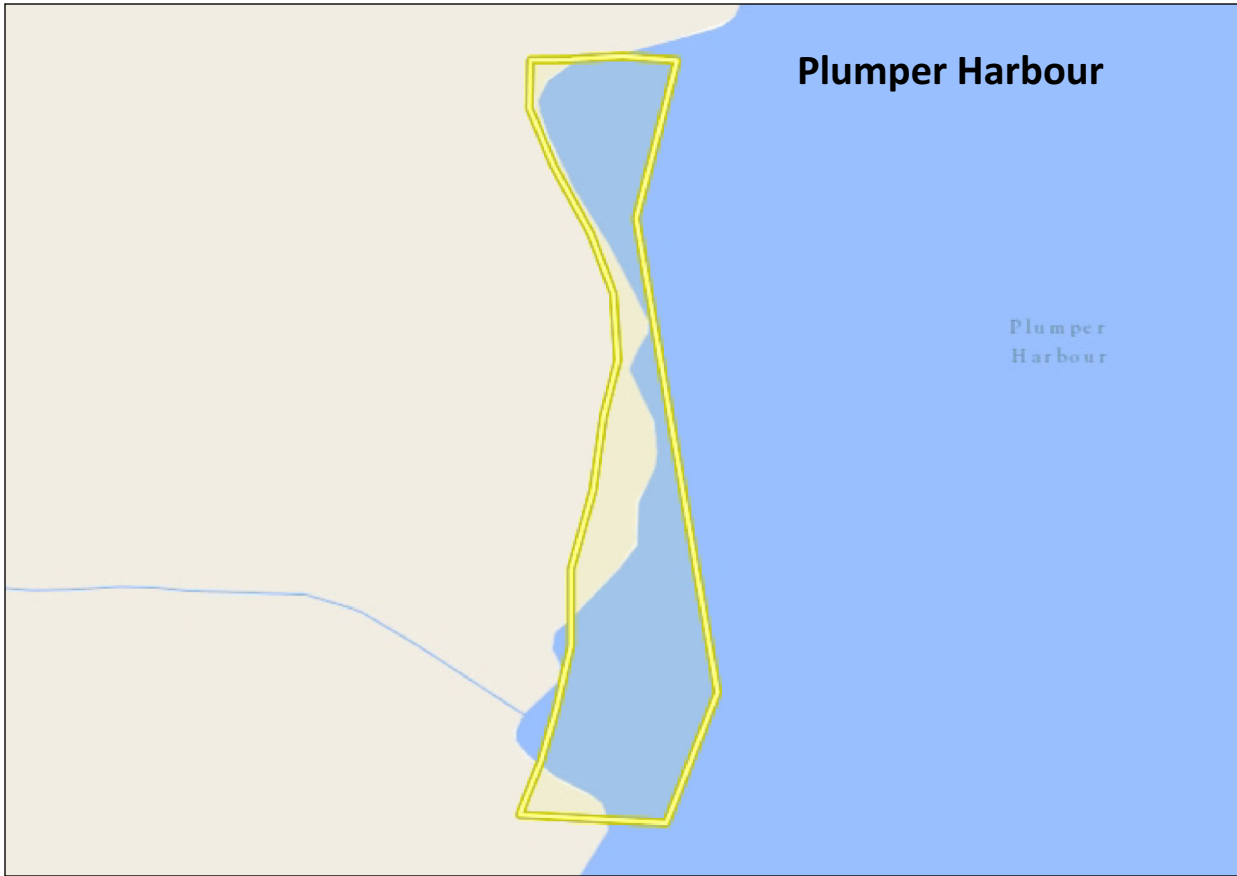
This is an excellent opportunity for someone wanting to work on the west coast, be their own boss and get involved in the aquaculture industry with a well-respected company brand, or to own a shellfish growing company and hire workers for the farm sites. These three tenures have been well-managed for years, with an active and knowledgeable owner who is willing to provide assistance to a new owner.



[bcoceanfront.com](http://www.bcoceanfront.com)









www.bcoceanfront.com

Shelley McKay* 250-830-4435

Aren Knudsen 250-203-0664

Ed Handja* 250-287-0011

theteam@bcoceanfront.com



888-286-1932

250-287-0011

106456 Hanna Creek Nootka Island BC VOP 1X0
 MLS® No: **970396** **\$199,900** **Active**



MLS® No: **970396**
 Status: **Active**
 Area: **Islands**

List Price: **\$199,900**
 Orig Price: **\$199,900**
 Sub Area: **Isl Small Islands (North Island Area)**

DOM: **18**
 Sub Type: **Other**
 Pend Date:

Sold Price:

Title: **Other**

Nootka Sound Shellfish Ltd currently operates three shellfish tenures in the Nootka Sound region. The company has been operating on the west coast of Vancouver Island for decades and is involved with the BC Shellfish Growers Association. These are all oyster and clam producing sites. The seller is willing to assist a new owner with learning the farms and the basic workings of the business. This offering is a share sale for the purchase of Nootka Sound Shellfish Limited. The assets include the three shellfish tenures which are all in the Nootka Sound region, off the west coast of Vancouver Island. This is a well-known and productive ocean harvest region, with boat access from Gold River, Tahsis or Zeballos on Vancouver Island. Plumper and Kendrick are both beachfront tenures, while Hanna Creek is both a beachfront and a deep-water site. The offering also includes a skiff which is registered in the company's name, used to carry product and equipment and to travel between sites.

Interior

Beds:	Baths:	Kitchens:	Fireplaces:	Storeys:
FinSqFt Total:	UnFin SqFt:	SqFt Total:	Basement: No	Add Accom:
2pc Ensuites:	3pc Ensuites:	4+pc Ensuites:	Beds or Dens:	Laundry:
Layout:		Appl Incl:		
Heating:		Cooling:		
Intr Ftrs:				

Exterior/Building

Built (Est):	Front Faces:	Storeys:	Bldg Warranty:
Construction:		Foundation:	Roof:
Lgl NC Use:	Access: Marine		Bldg Style:
Exterior Ftrs:			

Lot

Lot SqFt: 1,176,120	Lot Acres: 27.00	Dimensions:	Shape:	Waterfront: Ocean	Water: None
Park Type:	Park Spcs:	View: Mountain(s), Ocean			
Carpport Spcs:	Garage Spcs:	Services:			
Sewer: None	Restrictions:				
Lot Ftrs: Acreeage, Foreshore Rights, Quiet Area, Recreation Nearby, Rural Setting, Southern Exposure, Walk on Waterfront					

Legal/Public Records

Assessed: \$4,633	Assess Yr: 2024	Taxes: \$0	Tax Year: 2023
PID:	Roll No: 27505.895	Zoning:	Zone Desc:
Plan Number:	Lot: Block:	District Lot:	Land District:
Legal Description: All shares in Nootka Sound Shellfish Ltd. which includes: License #V873203 File #1411123 Kendrick Inlet, License #107766 File #1406265 Plumper Harbour, and License File #106456 File #1405705 Hanna Creek.			



The BC Oceanfront Real Estate Team



Shelley McKay
Personal Real Estate Corporation
250-830-4435



Aren Knudsen
REALTOR®
250-203-0664



Ed Handja
Personal Real Estate Corporation
250-287-0011

www.bcoceanfront.com

ROYAL LEPAGE Advance Realty
(CampblRiv)

972 Shoppers Row
Campbell River, BC V9W 2C5
250-286-3293 | 1-888-286-1932

Best efforts have been made to provide the most current and accurate information from sources believed to be reliable. Buyers should verify any information that is important to them to their sole satisfaction.



bcoceanfront.com